



<b>Engine</b>	Weichai WP4G95E221
<b>Gross Power</b>	70 kW (94 hp / 95 PS) @ 2,200 rpm
<b>Net Power</b>	68 kW (91 hp / 92 PS) @ 2,200 rpm
<b>Maximum Speed</b>	36 km/h
<b>Standard Loader Bucket Capacity</b>	1.0 m <sup>3</sup>
<b>Standard Backhoe Bucket Capacity</b>	0.2 m <sup>3</sup>
<b>Operating Weight</b>	8,100 kg

# 766A BACKHOE LOADER

# 766A SPECIFICATIONS >>>

## ENGINE

Emission Regulation	Tier 2 / Stage II
Manufacturer	Weichai
Model	WP4G95E221
Gross Power	70 kW (94 hp / 95 ps) @ 2,200 rpm
Net Power	68 kW (91 hp / 92 ps) @ 2,200 rpm
Peak Torque	383 N · m @ 1,500 rpm
Displacement	4.5 L

## ELECTRICAL SYSTEM

System Voltage	12 V
Battery Rating	95 amp-hr

## DRIVE TRAIN

Number of Drive Wheels	2WD/4WD
1st Maximum Speed, fwd/rev	5.9 km/h
2nd Maximum Speed, fwd/rev	10.7 km/h
3rd Maximum Speed, fwd/rev	20.5 km/h
4th Maximum Speed, fwd/rev	36 km/h
Turning Radius Outside of Front Tire	4,400 mm
Turning Radius Outside of Bucket	5,554 mm

## BRAKES

Service Brake Type	Wet disc
Service Brake Actuation	Hydraulic service

## TIRES

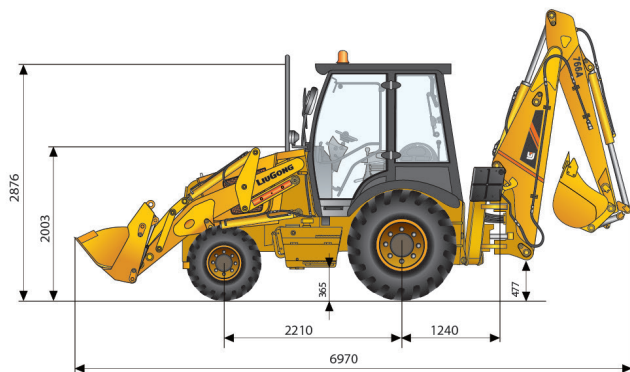
Front Tire Size	14-17.5NHS-14RP T
Rear Tire Size	19.5 L-24NHS 14PR T

## HYDRAULIC SYSTEM

Circuit Type	Open
Total Flow	143 L/min
Main Relief Pressure	24 MPa
Pump Type	Tandem gear pump
Steering Type	Priority valve

## OPERATING WEIGHTS

Operating Weight	8,100 kg
------------------	----------



## LOADER PERFORMANCE

Standard Bucket Type (referenced)	General purpose
Heaped Capacity ISO (referenced)	1.0 m <sup>3</sup>
Standard Bucket Width (referenced)	2,260 mm
Lift Capacity at Full Height	30.2 kN
Bucket Breakout Force	59.3 kN
Maximum Dump Angle at Full Height	45°
Dump Height at Maximum Angle	2,691 mm
Dump Reach at Full Height Discharge	713 mm
Boom Lift Capacity, end, at ground	49.3 kN
Maximum Dig Depth	89 mm

## BACKHOE PERFORMANCE

Standard Bucket Type (referenced)	General Purpose
Heaped Capacity ISO (referenced)	0.2 m <sup>3</sup>
Standard Bucket Width (referenced)	610 mm
Maximum Dig Depth	4,440 mm
Reach From Swing Pivot at Ground	5,443 mm
Turning Angle of Bucket	186°
Bucket Digging Force	58.2 kN
Dipper Digging Force, standard stick	37.5 kN
Loading Height	3,586 mm

## SERVICE CAPACITIES

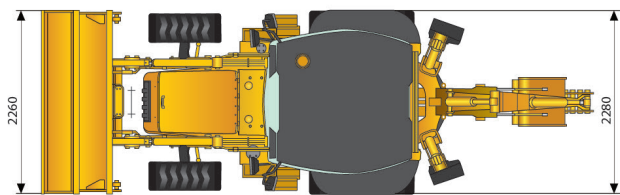
Fuel Tank	130 L
Engine Oil	13 L
Cooling System	15 L
Hydraulic Reservoir	130 L
Hydraulic System Total	170 L
Transmission and Torque Converter	16 L
Axle, front	6.9 L
Axle, rear	16 L

## STANDARD EQUIPMENT

Weichai WP4G95E221 Engine
Carraro Transmission
Open Cab, ROPS / FOPS
Auxiliary Hydraulic Kit
Carraro 4 x 2 Axles
Boom Interlock
General Purpose Bucket 1.0 / 0.2 m <sup>3</sup>
Seat Belt

## OPTIONAL EQUIPMENT

Enclosed Cab, ROPS / FOPS, with AC
Rotary Beacon
Hydraulic Shear
Vibratory Tamper
Hydraulic Hammer
Carraro 4 x 4 Axles
4 in 1 Bucket 1.0 m <sup>3</sup>
Telescopic Boom



Unit:mm

**PT BUMI CITRA TRAKTOR NUSANTARA**  
WTC Mangga Dua, Lantai 3A,  
Jl. Mangga Dua Raya No. 8, Kel. Ancol, Kec. Pademangan,  
Jakarta Utara, 14430. Telp. (021) 3001 2318 ext. 201

### Branch Office

- Jakarta
- Pekanbaru
- Jambi
- Medan
- Surabaya
- Banjarmasin

