



<b>Engine</b>	ChongQing Cummins
<b>Gross Power</b>	179 kW (240 hp / 243 ps) @ 2,000 rpm
<b>Net Power</b>	169 kW (227 hp / 230 ps) @ 2,000 rpm
<b>Maximum Torque</b>	1,050 N · m
<b>Blade Capacity</b>	7.8 m <sup>3</sup>
<b>Operating Weight</b>	24,540 kg

# B230 BULLDOZER

# B230 SPECIFICATIONS >>>

ENGINE	
Emission Regulation	Tier 1 / Stage I
Manufacturer	ChongQing Cummins
Model	NT855C280S10
Gross Power	179 kW (240 hp / 243 ps) @ 2,000 rpm
Net Power	169 kW (227 hp / 230 ps) @ 2,000 rpm
Peak Torque	1,050 N · m @ 1,400 rpm
Number of Cylinders	6
Aspiration	Turbocharged
Displacement	14 L

TRANSMISSION	
Transmission Type	Power shift
Maximum Travel Speed, fwd	12 km/h
Maximum Travel Speed, rev	13.8 km/h
Number of Speeds, fwd	3
Number of Speeds, rev	3

ELECTRICAL SYSTEM	
System Voltage	24 V

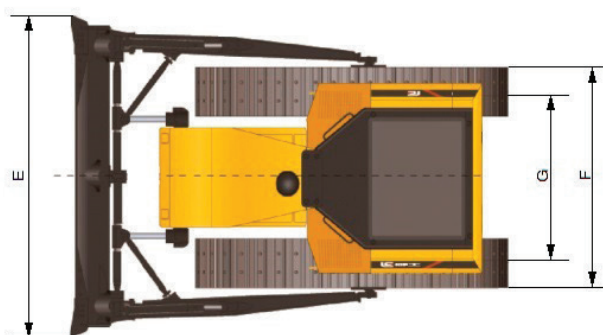
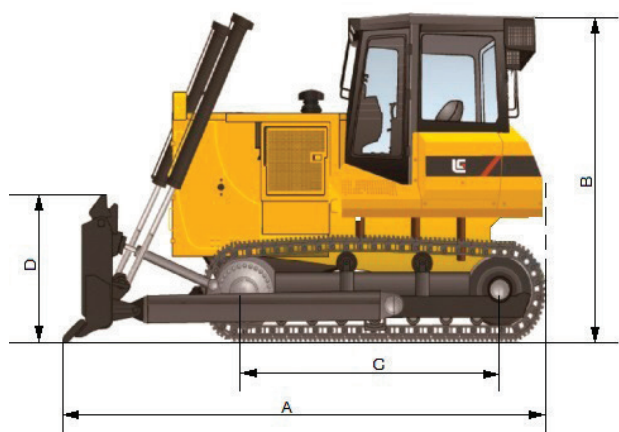
UNDERCARRIAGE	
Shoe Width	560 mm
Number of Shoes per Side	39
Number of Upper Rollers per Side	2
Number of Bottom Rollers per Side	7
Shoe Ground Pressure	76 kPa
Track on Ground	2,840 mm

DIMENSIONS	
A Overall Length	5,500 mm
B Height to Top of Cab	3,380 mm
C Track Length on Ground	2,840 mm
D Blade Height	1,395 mm
E Blade Width	3,725 mm
F Width over Track	2,560 mm
G Track Gauge	2,000 mm

OPERATING WEIGHTS	
Operating Weight	24,500 kg

BLADE PERFORMANCE	
Blade Type (referenced)	Straight
Blade Capacity (referenced)	7.8 m <sup>3</sup>
Blade Width	3,725 mm
Blade Height	1,395 mm
Blade Depth below Ground	540 mm
Blade Lift above Ground	1,210 mm
Blade Tilt	735 mm

SERVICE CAPACITIES	
Fuel Tank	480 L
Engine Oil	45 L
Cooling System	79 L
Hydraulic System Total	110 L
Transmission and Torque Converter	122 L
Final Drives, each	82 L



Unit: mm

**PT BUMI CITRA TRAKTOR NUSANTARA**  
 WTC Mangga Dua, Lantai 3A,  
 Jl. Mangga Dua Raya No. 8, Kel. Ancol, Kec. Pademangan,  
 Jakarta Utara, 14430. Telp. (021) 3001 2318 ext. 201

#### Branch Office

- Jakarta
- Medan
- Jambi
- Surabaya
- Banjarmasin
- Pekanbaru



Specifications and design are subject to change notice. Machines shown may include optional equipment. LiuGong standard and optional equipment may vary from region to region. Please consult your LiuGong dealer for information specific to your area. Engine power kW is converted to horsepower (1 kW=1.3596 ps and 1 kW=1.3410 hp) in this file.